

Intelligent Monitoring for Man Down Detection



HOW IT WORKS

Developed with **advanced AI**, the ALTAVE HARPIA software uses pattern recognition algorithms to **identify fall or immobility situations of people in monitored areas**. Integrable with other applications, the system **detects people on the ground in about one second after** recognizing a fall and sends instant alerts to expedite worker assistance and halt activities, mitigating risks around them.

DATA TRANSFORMED INTO INTELLIGENCE

Alerts are recorded on the **HARPIA platform**, enabling auditing and analysis of occurrences. By compiling incident history in an intuitive dashboard with **automatic report generation**, the system provides valuable insights for safety improvements, such as incident location, frequency of occurrences by area, and peak incident times.

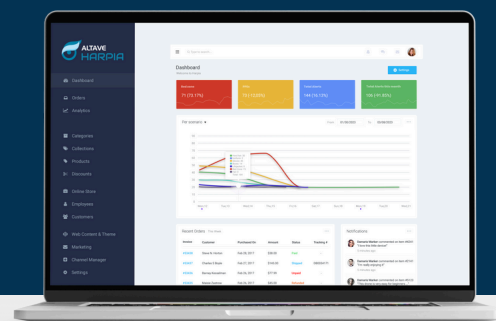


IMPROVED OPERATIONAL EFFICIENCY

By offering a **proactive approach to incident identification and response**, the man down detection system significantly contributes to **protecting lives and resources** in operations. This implementation results in a **substantial reduction of costs** associated with workplace accidents, decreases the risk of labor lawsuits, and minimizes long interruptions in activities. The system's ability to alert about falls in the work environment goes beyond merely assisting management in responding to incidents. It promotes a **general sense of protection in the workplace**, optimizes productivity, and strengthens a culture of prevention and mutual care among employees.

ENHANCED SAFETY

Rapid and accurate detection of "man down" situations significantly contributes to **reinforcing workplace safety**, allowing immediate responses to accidents or medical emergencies, ensuring that **no fall incident goes unnoticed**. The detections, combined with the intelligence provided by the control panel, directly contribute to reducing incidents, response time, and consequently, the severity of occurrences.



BRING YOUR COMPANY TO THE FUTURE OF OCCUPATIONAL SAFETY

- ✓ **24/7 support** throughout the entire project lifecycle
- ✓ **Installation** included
- ✓ **Seamless integration** with existing hardware
- ✓ **High flexibility and customization**
- ✓ **Continuous evolution** with alerts validation
- ✓ Technology present on five continents and **trusted by innovation leaders**

For more information, contact our sales representatives: sales@altave.com.br

