

Intelligent Steam Leak Monitoring

HOW IT WORKS

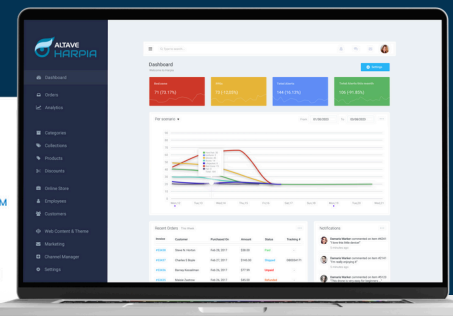
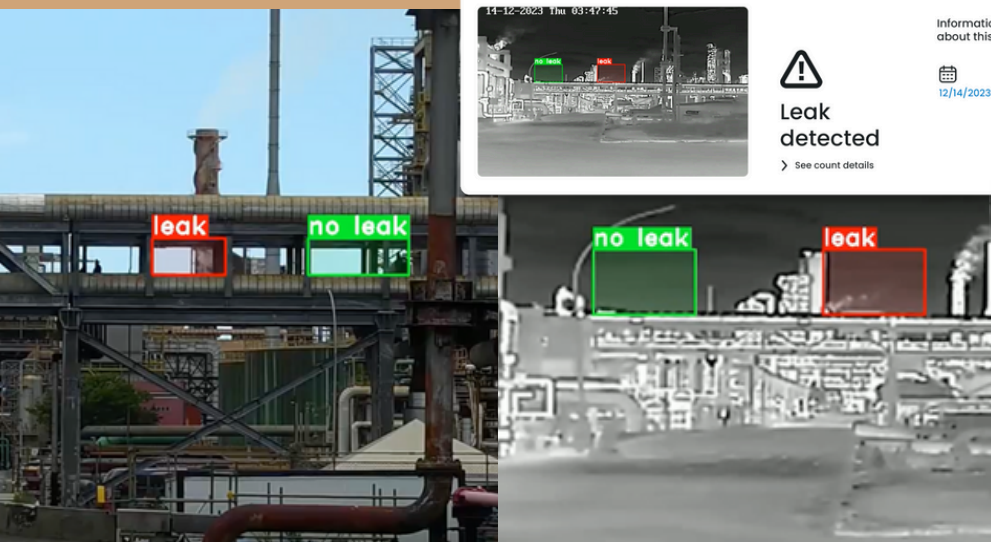
Strategically positioned thermal cameras continuously monitor process areas, capturing high-resolution thermal images. These images are **processed in real-time** by the ALTAVE Harpia software, which **identifies and locates leak points**. The data is presented on intuitive dashboards with customized components that adapt to each client's specific needs, **providing a comprehensive situational awareness and facilitating quick and effective decision-making**.

IMPROVED OPERATIONAL EFFICIENCY

With **automatic and continuous detection**, HARPIA eliminates the need for extensive visual inspections and **drastically reduces leak identification time**. This results in **significant optimization of human resources**, **reduction of raw material losses** for steam production, and **minimization of costs** associated with maintaining the duct system and equipment. Additionally, the system **prevents substantial losses** resulting from energy loss, reduced efficiency of industrial processes, and potential equipment damage, directly contributing to **improved financial and operational performance of the plant**, as well as contributing to **sustainability**.

DATA TRANSFORMED INTO INTELLIGENCE

The system generates **automatic alerts 24/7**, prioritizing the most critical leaks and directing maintenance teams with **agility and precision**. Detailed historical records and incidence reports allow for **in-depth analysis of leak patterns**, aiding in prevention and **optimization of maintenance processes**. The ALTAVE solution not only detects but quantifies and contextualizes each occurrence, **transforming raw data into actionable intelligence for strategic decisions**.



ENHANCED SAFETY AND SUPPORT

ALTAVE offers a **complete solution, including robust hardware, intelligent software, and specialized technical support**. Our Operations Control Center (OCC) monitors the system **24/7**, ensuring its **continuous operation and optimal performance**. Technical support teams are always available for remote assistance and preventive and corrective maintenance on-site, ensuring **maximum reliability and effectiveness of the solution**.

BRING YOUR COMPANY TO THE FUTURE OF OCCUPATIONAL SAFETY

- ✓ **24/7 support** throughout the entire project lifecycle
- ✓ **Installation** included
- ✓ **Seamless integration** with existing hardware
- ✓ **High flexibility and customization**
- ✓ **Continuous evolution** with alerts validation
- ✓ Technology present on five continents and **trusted by innovation leaders**

For more information, contact our sales representatives: sales@altave.com.br

